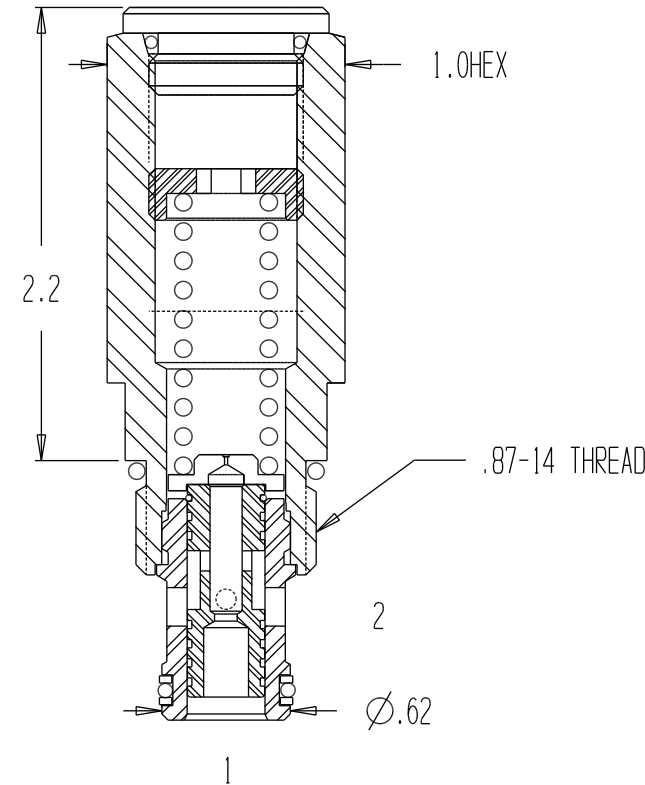
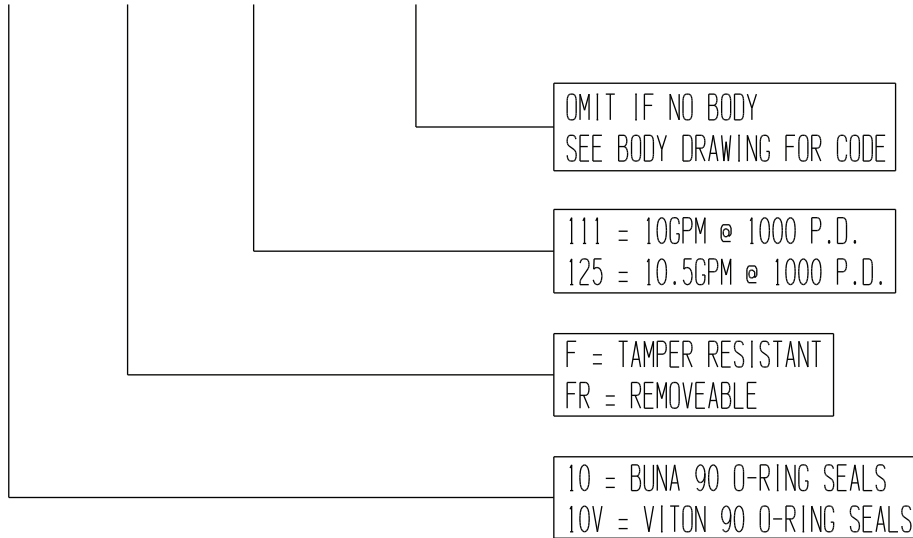


PCFC-10X-FX-XXX-XXXX



| GENERAL SPECIFICATIONS | |
|------------------------|---|
| PRESSURE | 5,000 PSI WORKING |
| FLOW RATE | 10 GPM MAX. |
| MEDIA | PETROLEUM MINERAL BASE SAE 20. OTHER BASES MAY REQUIRE SEAL CHANGES. |
| CAVITY | 2141-10-2 |
| SEAL KIT | 5071 |
| LEAKAGE | INTERNAL-10 CUBIC INCHES/MIN., EXTERNAL-NONE. |

