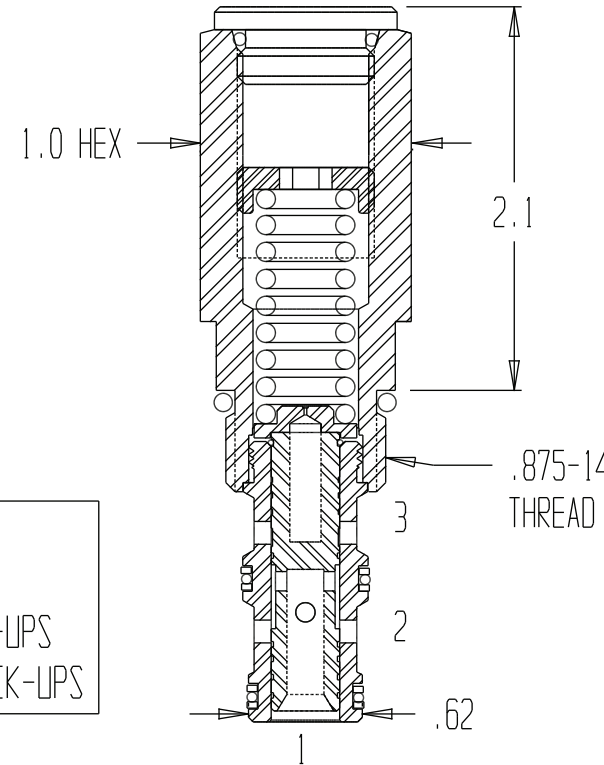
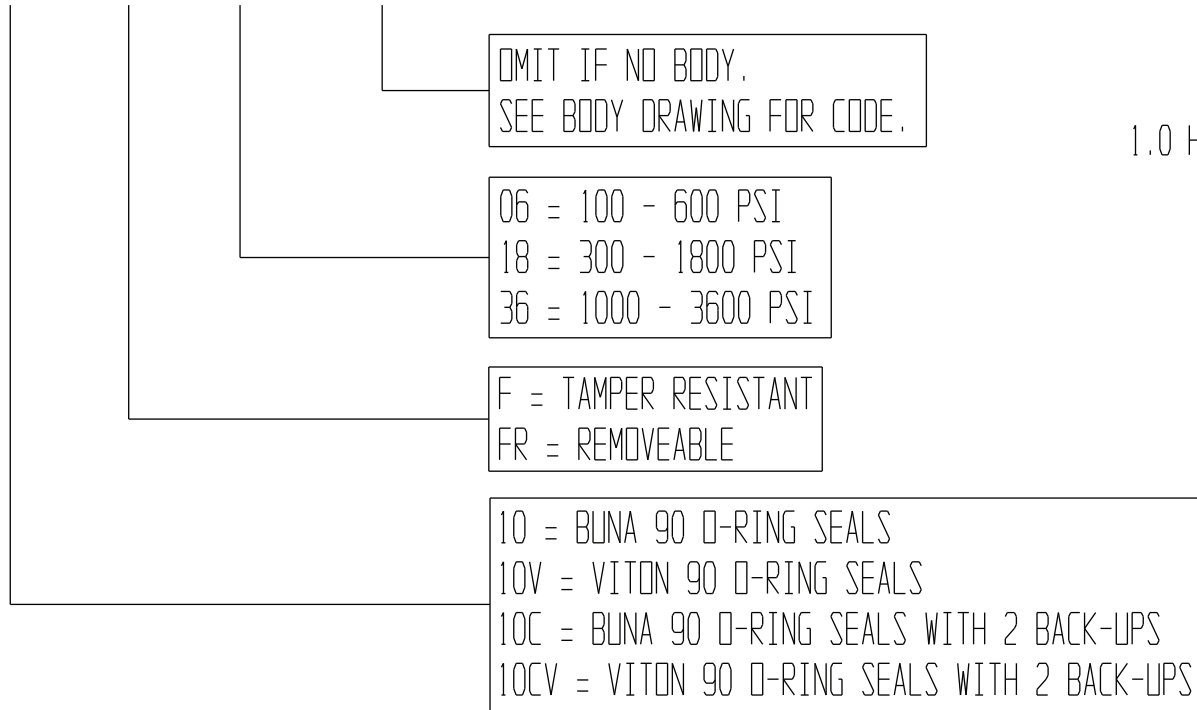
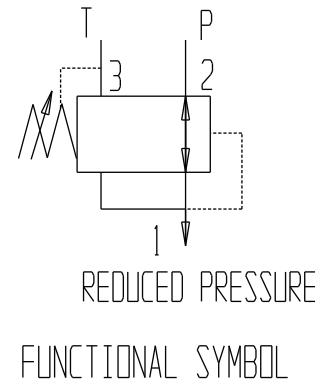


# PRDIR-10X-FX-XX-XXXX



	GENERAL SPECIFICATIONS
PRESSURE	5,000 PSI WORKING
FLOW RATE	8 GPM
MEDIA	PETROLEUM MINERAL BASE SAE 20. OTHER BASES MAY REQUIRE SEAL CHANGES.
CAVITY	2141-10-3
SEAL KIT	5075 ( BUNA ), 5077 ( VITON )
LEAKAGE - MAX. FOR 250-450°F.	INTERNAL-10 CUBIC INCHES/MIN., EXTERNAL-NONE. SPECIFY VITON WITH A (10V).



THIS IS A FACTORY SET DIRECT OPERATED  
PRESSURE REDUCING VALVE CARTRIDGE.