

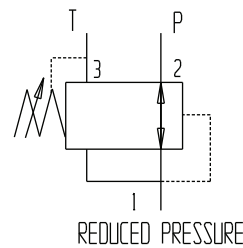
ITEM NUMBER	QUANTITY	PART NUMBER	DESCRIPTION
1	1	5926	HOUSING
2	1	5922	CAGE
3	1	5578	GUIDE
4	1	5923	SPOOL
5	1	1404	SCREW
6	1	5924	RING, WIRE
7	2 DROPS	5121	SEALANT-262 O.D. THREADS
8	1	1569	NUT, LOCK - KNURLED
9	1	1405	CAP, ADJUSTING
10	1	1570-012	O-RING, VITON 90 DURD.
11	1	1089-012	BACK-UP RING
12	1	SELECT SPRING FOR MAXIMUM RELIEF PRESSURE:	
		MODEL CODE	PART NO. RANGE
		25	5087 100 - 2500 PSI
		50	5088 200 - 5000 PSI
MODEL CODE "12" Buna 90 O-RING SEALS			
	13	1	1402-908 O-RING
	14	1	1402-912 O-RING
	15	1	1100-115 O-RING
	16	1	1100-116 O-RING
OR: MODEL CODE "12V" VITON 90 O-RING SEALS			
	13	1	1519-908 O-RING
	14	1	1519-912 O-RING
	15	1	1570-115 O-RING
	16	1	1570-116 O-RING
17	1	1568	KNOB, KNURLED Ø 1.5
18	1	1101	SET SCREW .31-18 X .375
19	2	1221-115	BACK-UP, 1/2 WIDTH
20	2	1221-116	BACK-UP, 1/2 WIDTH
21	1	5111	SPRING, COMPRESSION
22	1	1087-187	BALL, STEEL
23	1	5925	CAP
24	1	1570-012	O-RING, VITON 90 DURD.
25	1	1089-012	BACK-UP RING
26	1 SPRAY	5122	PRIMER, I.D. THREADS

NOTE: STAMP DATE AND PART NUMBER ON THE FLATS OF THE HEX OF THE HOUSING

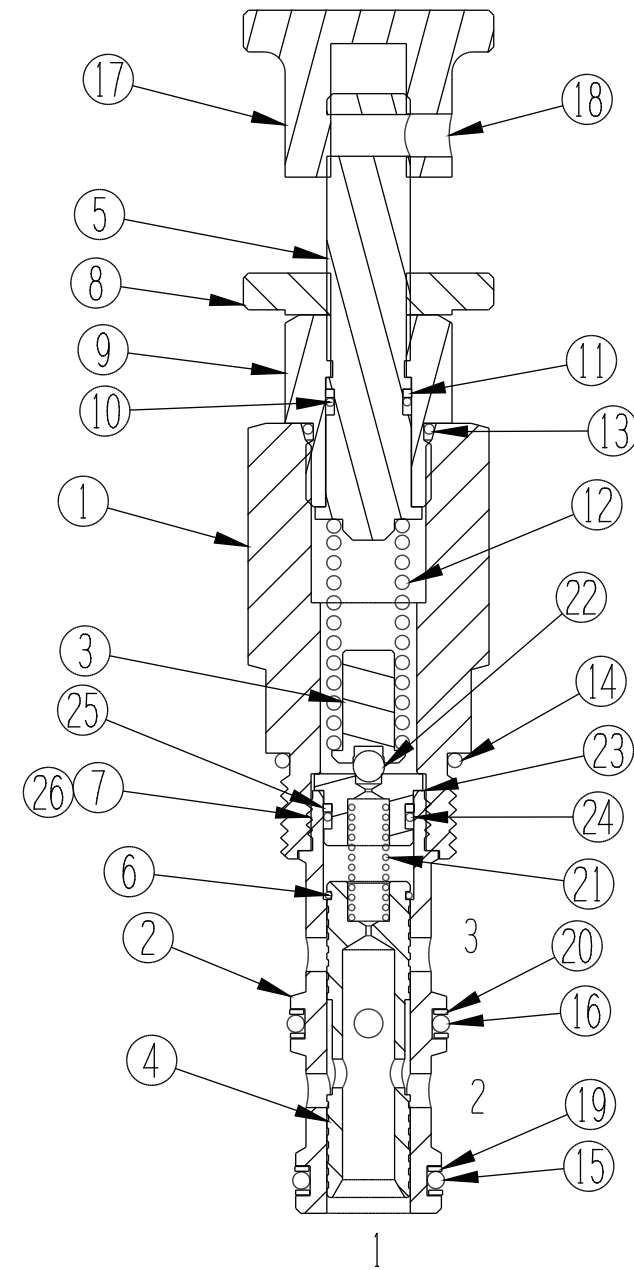
OMIT IF NO BODY. SEE BODY DRAWING FOR CODE.

PRPIL-12X-K-XX-XX

PRESSURE REDUCING CARTRIDGE, PILOT OPERATED-KNOB ADJUSTABLE



FUNCTIONAL SYMBOL



GENERAL SPECIFICATIONS	
PRESSURE	5,000 PSI WORKING
FLOW RATE	15 GPM
MEDIA	PETROLEUM MINERAL BASE SAE 20. OTHER BASES MAY REQUIRE SEAL CHANGES.
CAVITY	12-3
SEAL KIT	
LEAKAGE	INTERNAL-10 CUBIC INCHES/MIN., EXTERNAL-NONE.
FOR 250-450° F.	SPECIFY VITON WITH A (12V).