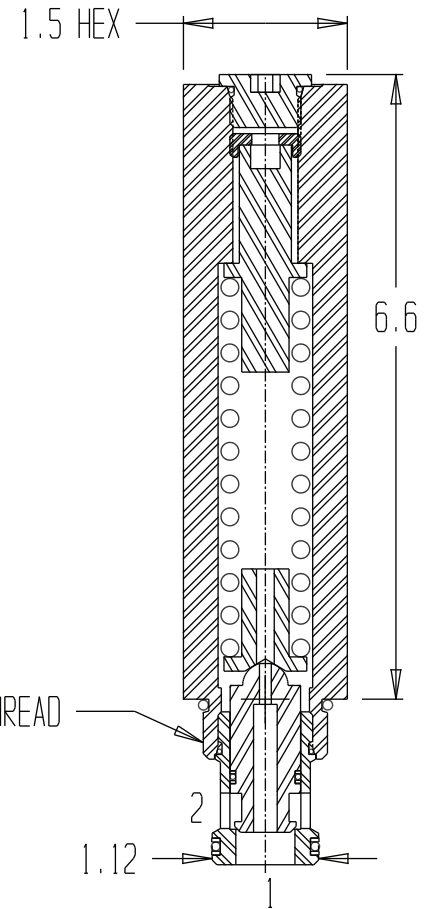


# RDIF-16X-FR-XX-XXXX

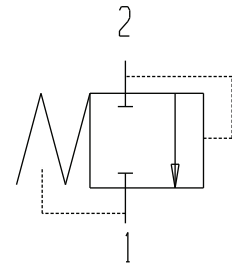
OMIT IF NO BODY.  
SEE BODY DRAWING FOR CODE.

06 = 100 - 600 PSI  
18 = 300 - 1800 PSI  
36 = 1000 - 3600 PSI

16 = BUNA 90 O-RING SEALS  
16V = VITON 90 O-RING SEALS  
16C = BUNA 90 O-RING SEALS WITH 2 BACK-UPS  
16CV = VITON 90 O-RING SEALS WITH 2 BACK-UPS



DIFFERENTIAL AREA RELIEF VALVE CARTRIDGE



FUNCTIONAL SYMBOL

	GENERAL SPECIFICATIONS
PRESSURE	5,000 PSI WORKING
FLOW RATE	40 GPM
MEDIA	PETROLEUM MINERAL BASE SAE 20. OTHER BASES MAY REQUIRE SEAL CHANGES.
CAVITY	5053-16-2
SEAL KIT	5324
LEAKAGE - MAX.	INTERNAL - 10 DROPS/MIN., EXTERNAL-NONE.
SET PRESSURE	WHEN DROPS BECOME A STREAM