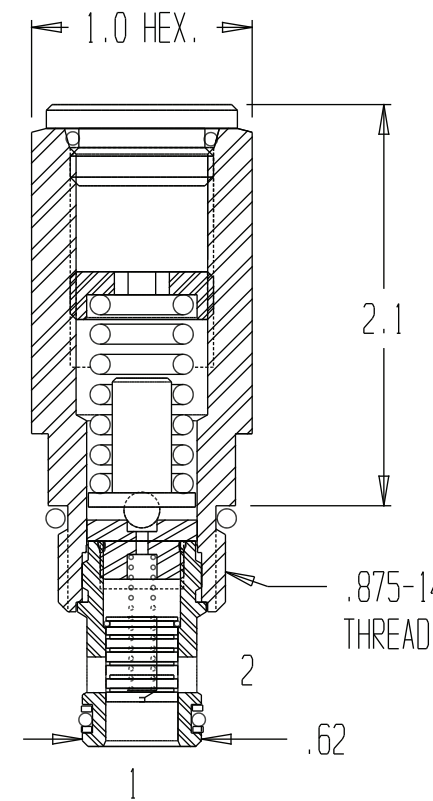
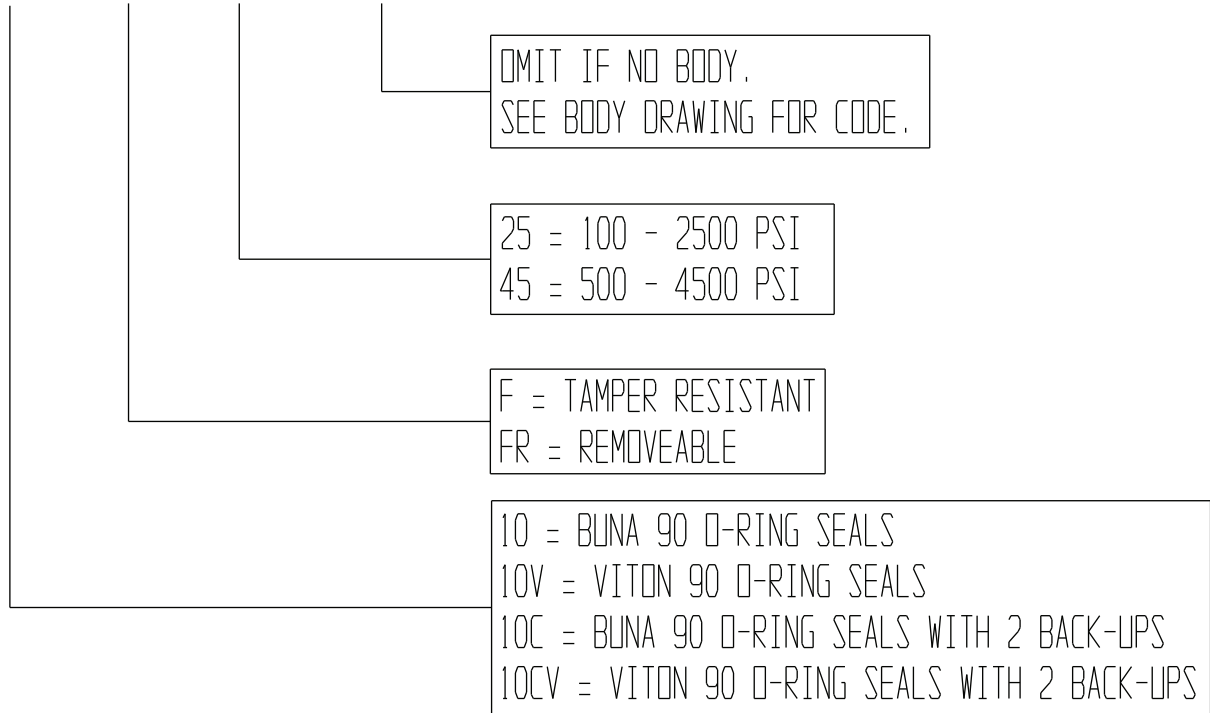
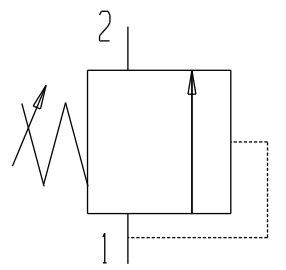


RPILS-10X-FX-XX-XXXX



| GENERAL SPECIFICATIONS | |
|----------------------------------|---|
| PRESSURE | 5,000 PSI WORKING |
| FLOW RATE | UP TO 30 GPM |
| MEDIA | PETROLEUM MINERAL BASE SAE 20. OTHER BASES MAY REQUIRE SEAL CHANGES. |
| CAVITY | 2141-10-2 |
| SEAL KIT | 5070 (BUNA), 5072 (VITON) |
| LEAKAGE - MAX. | INTERNAL - 5 CUBIC INCHES/MIN., EXTERNAL-NONE. |
| CRACK PRESSURE FOR 250-450°F. | WHEN FLOW EXCEEDS 10 CUBIC INCHES/MIN. SPECIFY VITON WITH A (10V). |



FUNCTIONAL SYMBOL

PILOT OPERATED SPOOL TYPE RELIEF VALVE CARTRIDGE. FOR HIGH FLOW CAPACITY WITHOUT GREAT SETTING DIFFERENTIAL FROM LOW TO HIGH FLOW. THIS STYLE IS FACTORY SET WITH A PLUG SECURING THE SETTING SCREW.