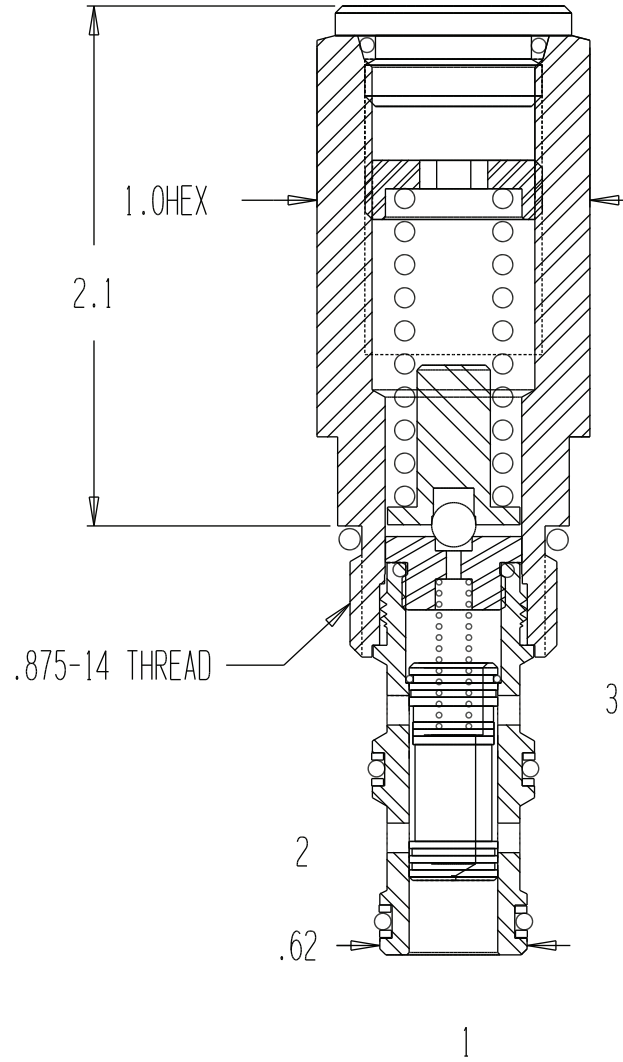
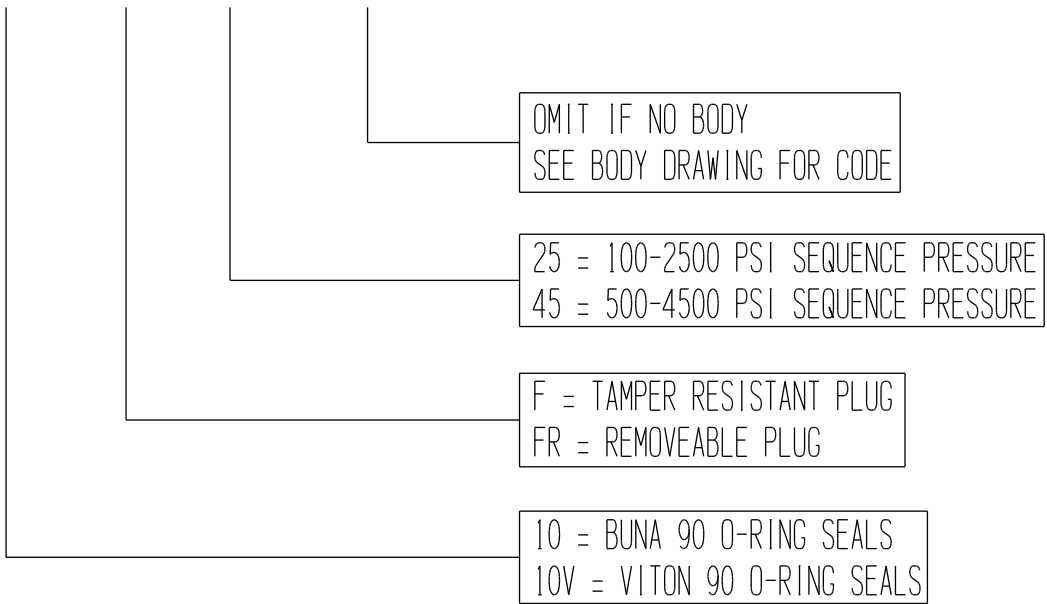
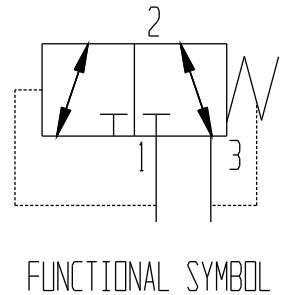


SEQ1-10X-FX-XX-XXXX



GENERAL SPECIFICATIONS	
PRESSURE	5,000 PSI WORKING
FLOW RATE	8 GPM
MEDIA	PETROLEUM MINERAL BASE SAE 20. OTHER BASES MAY REQUIRE SEAL CHANGES.
CAVITY	2141-10-3
SEAL KIT	5075 (BUNA), 5077 (VITON)
LEAKAGE	INTERNAL-10 CUBIC INCHES/MIN., EXTERNAL-NONE.
FOR 250-450° F.	SPECIFY VITON WITH A (10V).



FUNCTIONAL SYMBOL