

ITEM NUMBER	QUANTITY	PART NUMBER	DESCRIPTION
1	1	5093	HOUSING
2	1	5094	CAGE
3	1	5578	GUIDE
4	1	5881	SPOOL
5	1	1404	SCREW
6	1	1363	RING, WIRE
9	2 DROPS	5121	SEALANT-262 O.D. THREADS
10	1	1569	NUT, LOCK - KNURLED
11	1	1405	CAP, ADJUSTING
12	1	1406	STOP, ADJUSTMENT
13	1	1570-012	O-RING, VITON 90 DURO.
14	1	1089-012	BACK-UP RING
15	1	SELECT SPRING FOR MAXIMUM RELIEF PRESSURE:	

MODEL CODE	PART NO.	RANGE
25	5087	100 - 2500 PSI
50	5088	200 - 5000 PSI

MODEL CODE "10" Buna 90 O-RING SEALS

16	1	1402-908	O-RING
17	1	1402-910	O-RING
18	1	1100-014	O-RING
19	1	1100-015	O-RING

OR: MODEL CODE "10V" VITON 90 O-RING SEALS

16	1	1519-908	O-RING
17	1	1519-910	O-RING
18	1	1570-014	O-RING
19	1	1570-015	O-RING

GENERAL SPECIFICATIONS

PRESSURE	5,000 PSI WORKING
FLOW RATE	8 GPM
MEDIA	PETROLEUM MINERAL BASE SAE 20. OTHER BASES MAY REQUIRE SEAL CHANGES.
CAVITY	2141-10-3
SEAL KIT	5075 (BUNA), 5077 (VITON)
LEAKAGE	INTERNAL-10 CUBIC INCHES/MIN., EXTERNAL-NONE.
FOR 250-450° F.	SPECIFY VITON WITH A (10V).

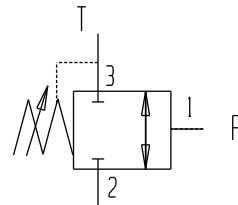
ITEM NO.	QUANTITY	PART NO.	DESCRIPTION
20	1	1568	KNOB, KNURLED Ø 1.5
21	1	1101	SET SCREW .31-18 X .375
22	2	1221-014	BACK-UP, 1/2 WIDTH
23	2	1221-015	BACK-UP, 1/2 WIDTH
24	1	5111	SPRING, COMPRESSION
25	1	1087-187	BALL, STEEL
26	1	5109	CAP
27	1	1570-011	O-RING, VITON 90 DURO.
28	1 SPRAY	5122	PRIMER, I.D. THREADS

NOTE: STAMP DATE AND PART NUMBER ON THE FLATS OF THE HEX OF THE HOUSING

OMIT IF NO BODY.
SEE BODY DRAWING FOR CODE.

SEQ2-10X-K-XX-XX

KNOB ADJUSTABLE PILOT OPERATED SEQUENCE CARTRIDGE



FUNCTIONAL SYMBOL

