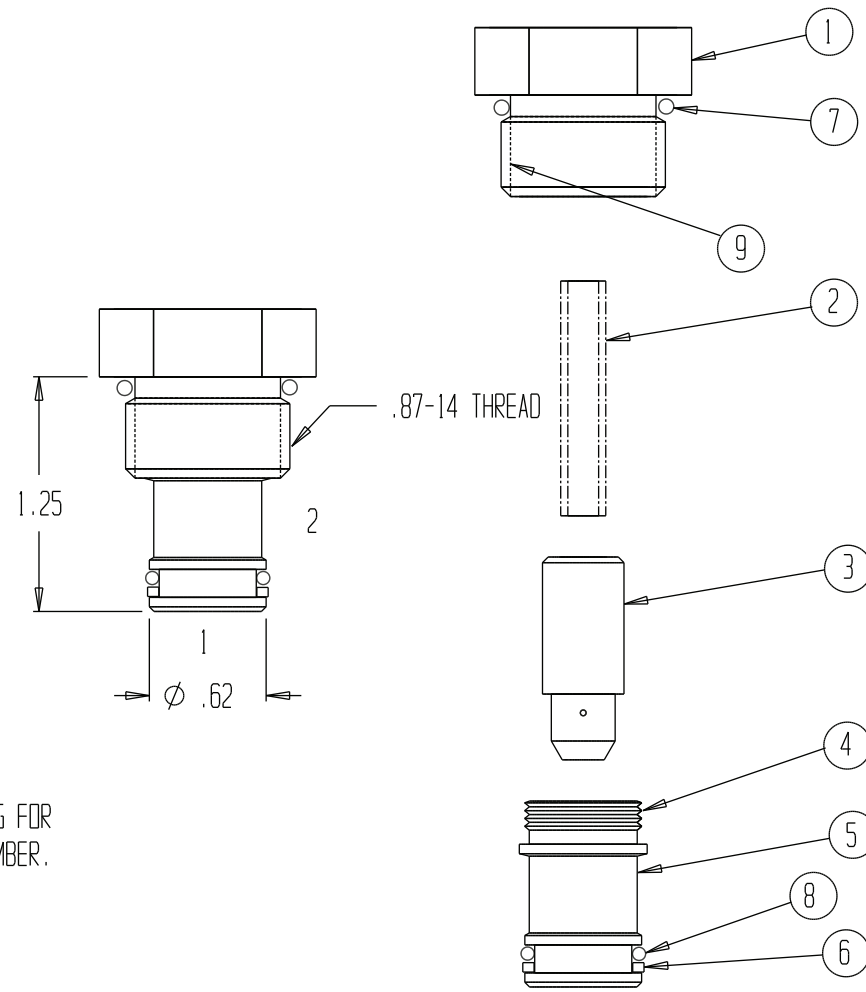


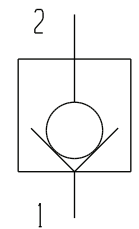
ITEM	QUANTITY	PART NUMBER	DESCRIPTION
1	1	1554	CAP
2	1	1528	SPRING
3	1	1555	POPPET
4	1 DROP	5121	SEALANT-CAGE O.D. THRS 262
5	1	5256	CAGE
6	1	1089-014	BACK-UP
MODEL CODE "10N" Buna-NITRILE 90 O-RING SEALS			
7	1	1402-910	O-RING
8	1	1100-014	O-RING
	0	5070	KIT, SERVICE SEAL
MODEL CODE "10V" VITON 90 O-RING SEALS			
7	1	1519-910	O-RING
8	1	1570-014	O-RING
	0	5072	KIT, SERVICE SEAL
MODEL CODE "10U" URETHANE 90 O-RINGS SEALS			
7	1	1576-910	O-RING
8	1	1574-014	O-RING
	0	5186	KIT, SERVICE SEAL
9	1 SPRAY	5122	PRIMER-CAP I.D. THREADS



OMIT IF NO BODY.
SEE BODY DRAWING FOR
CODE OR PART NUMBER.

COMPLETE MODEL NAME: CP1L-10X-BODY NUMBER

GENERAL SPECIFICATIONS	
PRESSURE	5,000 PSI WORKING
FLOW RATE	12 GPM AT 100 PSI DIFFERENTIAL.
MEDIA	PETROLEUM MINERAL BASE SAE 20. OTHER BASES MAY REQUIRE SEAL CHANGES.
CAVITY	2141-10-2
SEAL KIT	SEE CHART
LEAKAGE	INTERNAL- ZERO DROPS/MIN., EXTERNAL-NONE.
POPPET DISP.	.15
CRACK PRESSURE	6.5 PSI.



FUNCTIONAL SYMBOL

CP1L-10X