

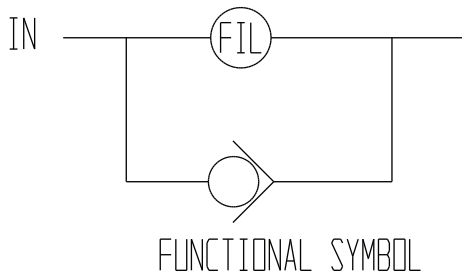
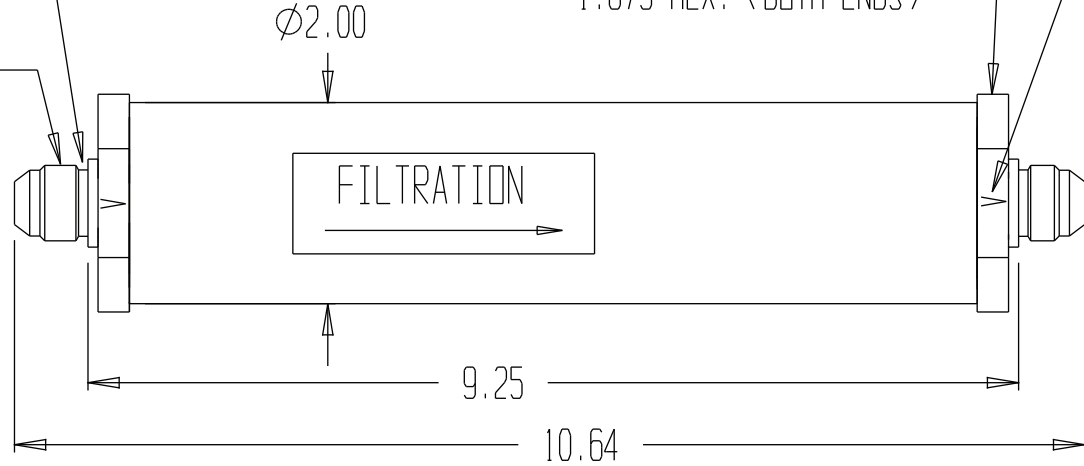
8055

SAE NO. 8-37° (BOTH ENDS)

BY ADDING A -908 O-RING AT EITHER END THIS FILTER CAN BE SCREWED DIRECTLY INTO A SAE NO. 08 O-RING PORT.

ARROW INDICATES DIRECTION OF FLOW.

1.875 HEX. (BOTH ENDS)



GENERAL SPECIFICATIONS	
PRESSURE	5,000 PSI WORKING
FLOW RATE	15 GPM
MEDIA	PETROLEUM MINERAL BASE SAE 20. OTHER BASES MAY REQUIRE SEAL CHANGES.
SEAL KIT	
LEAKAGE	EXTERNAL - NONE.

INLINE FILTER
THIS FILTER IS DESIGNED TO WITHSTAND FULL SYSTEM PRESSURE DIFFERENTIAL. NOMINAL 29 Å PARTICAL FILTRATION.