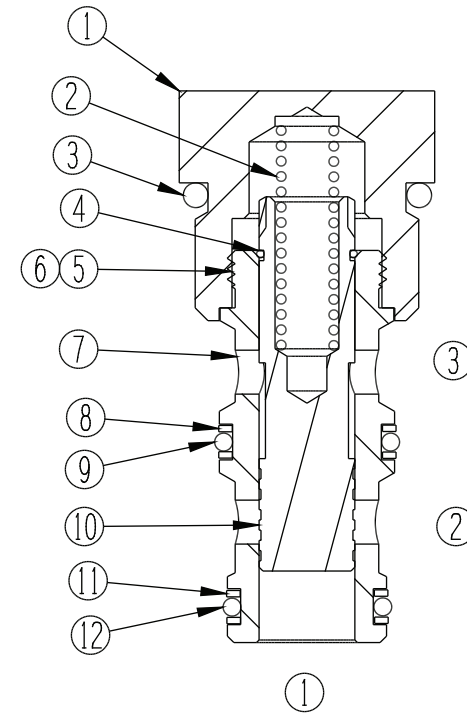
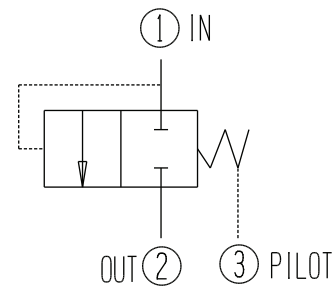


| ITEM | QUANTITY | PART NUMBER | DESCRIPTION |
|------|----------|-------------|---------------------|
| 1 | 1 | 5726 | CAP |
| 2 | 1 | 1194 | SPRING |
| 3 | 1 | 1402-910 | O-RING, BUNA 90 |
| 4 | 1 | 1363 | RING, WIRE |
| 5 | 1 SPRAY | 5122 | PRIMER |
| 6 | 1 DROP | 5121 | LOCTITE 262 SEALANT |
| 7 | 1 | 5972 | CAGE |
| 8 | 2 | 1221-015 | BACK-UP 1/2 WIDTH |
| 9 | 1 | 1100-015 | O-RING, BUNA 90 |
| 10 | 1 | 5961 | SPOOL |
| 11 | 2 | 1221-014 | BACK-UP 1/2 WIDTH |
| 12 | 1 | 1100-014 | O-RING, BUNA 90 |



| GENERAL SPECIFICATIONS | |
|------------------------|---|
| PRESSURE | 5,000 PSI WORKING |
| FLOW RATE | 20 GPM AT 100 PSI DIFFERENTIAL. |
| MEDIA | PETROLEUM MINERAL BASE SAE 20. OTHER BASES MAY REQUIRE SEAL CHANGES. |
| CAVITY | 2141-10-3 |
| SEAL KIT | 5075 |
| LEAKAGE | INTERNAL- 10 CUBIC INCHES/MIN., EXTERNAL-NONE. |

WHEN THE PRESSURE AT 1 IS 100PSI GREATER THAN THE PRESSURE AT 3, FLOW BEGINS FROM PORT 1 TO 2

DIFSNS-10
DIFFERENTIAL SENSING VALVE