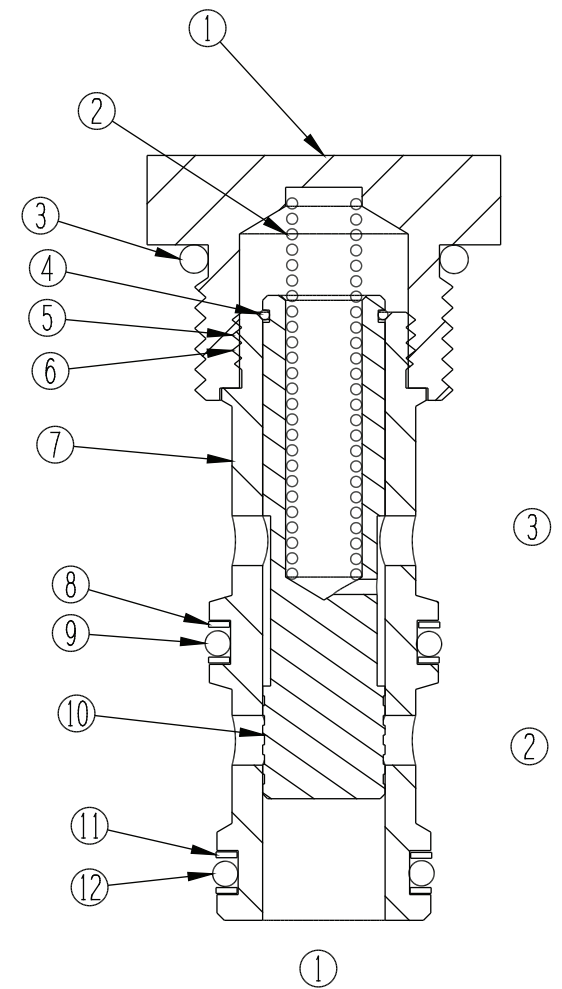
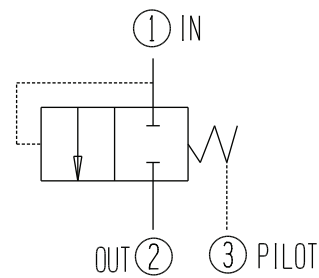


ITEM	QUANTITY	PART NUMBER	DESCRIPTION
1	1	5987	CAP
2	1	1062	SPRING
3	1	1402-912	O-RING, BUNA 90
4	1	5924	RING, WIRE
5	1 SPRAY	5122	PRIMER
6	1 DROP	5121	LOCTITE 262 SEALANT
7	1	5984	CAGE
8	2	1221-115	BACK-UP 1/2 WIDTH
9	1	1100-115	O-RING, BUNA 90
10	1	5985	SPOOL
11	2	1221-116	BACK-UP 1/2 WIDTH
12	1	1100-116	O-RING, BUNA 90



GENERAL SPECIFICATIONS	
PRESSURE	5,000 PSI WORKING
FLOW RATE	30 GPM AT 100 PSI DIFFERENTIAL.
MEDIA	PETROLEUM MINERAL BASE SAE 20. OTHER BASES MAY REQUIRE SEAL CHANGES.
CAVITY	SHOEMAKER CAVITY 12-3
SEAL KIT	
LEAKAGE	INTERNAL- 10 CUBIC INCHES/MIN., EXTERNAL-NONE.



WHEN THE PRESSURE AT 1 IS 80PSI GREATER THAN THE PRESSURE AT 3, FLOW BEGINS FROM PORT 1 TO 2

DIFSNS-12