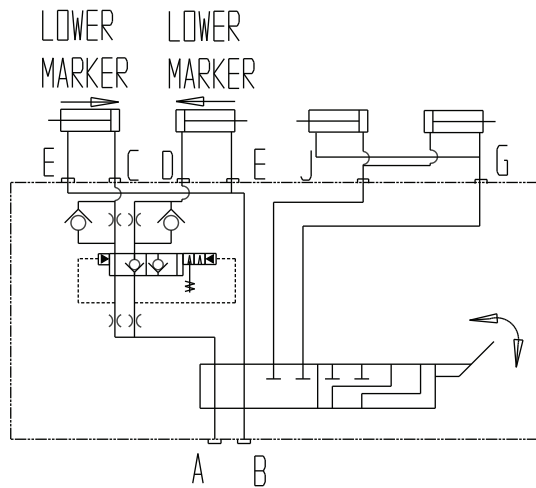
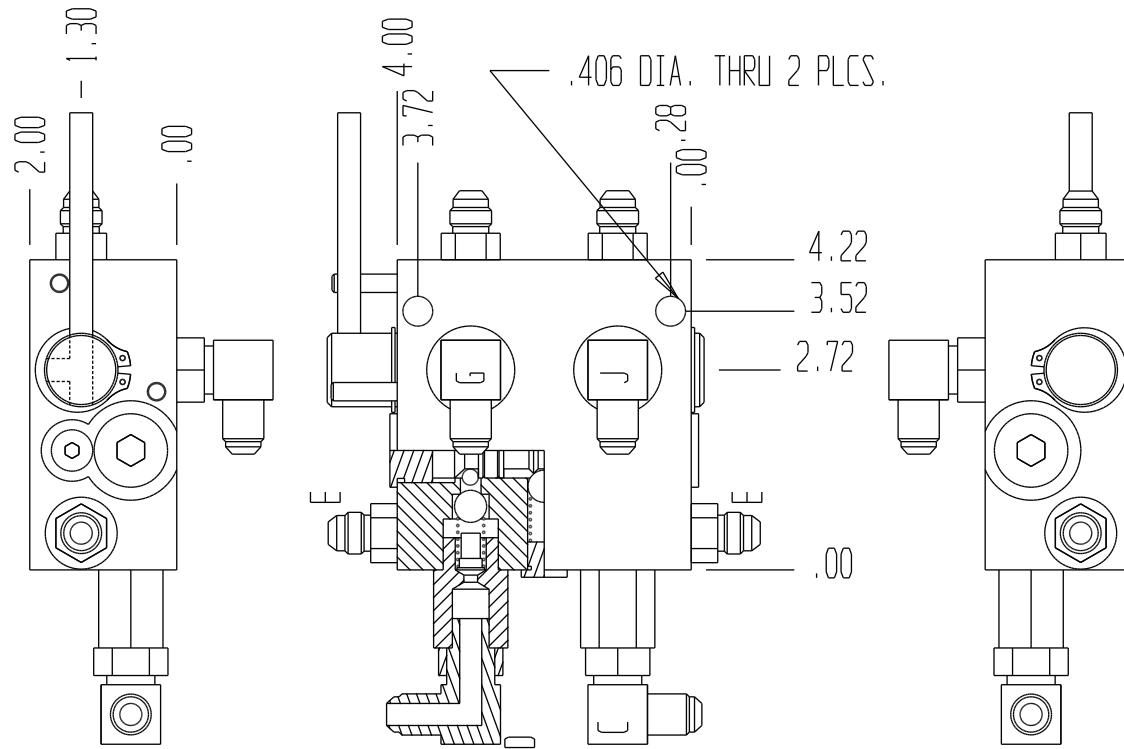
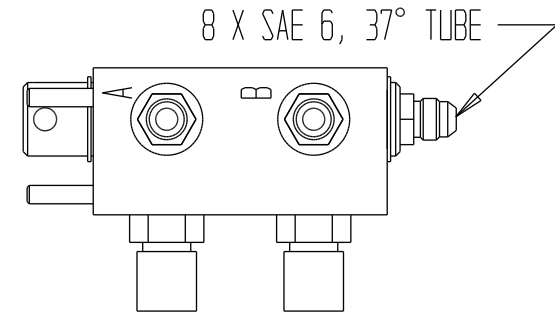


4050-XXX

ORIFICE SIZE	FLOW RATE
062	2.0-4.5 GPM
093	4.5-10.0 GPM



FUNCTIONAL SCHEMATIC



SELECTOR-SEQUENCE

THIS VALVE IS A COMBINATION OF TANDEM-SELECTOR AND 3-WAY SEQUENCE VALVE. A TYPICAL APPLICATION IS ON AN AGRICULTURAL FOLDING IMPLEMENT WITH ROW MARKERS.

	GENERAL SPECIFICATIONS
PRESSURE	5,000 PSI WORKING
FLOW RATE	SEE ORIFICE SIZE CHART ABOVE
MEDIA	PETROLEUM MINERAL BASE SAE 20. OTHER BASES MAY REQUIRE SEAL CHANGES.
SEAL KIT	5413
LEAKAGE MAX.	INTERNAL - 5 DROPS/MIN., EXTERNAL - NONE.