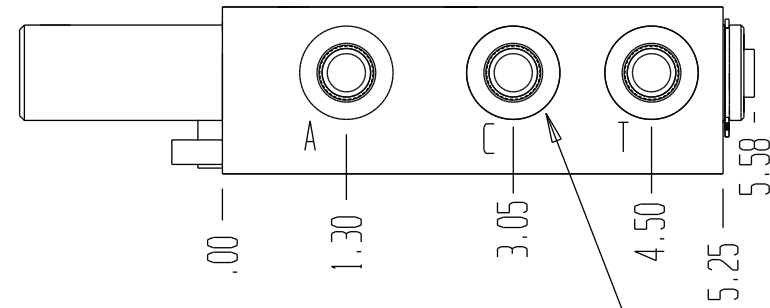
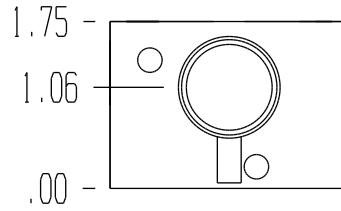
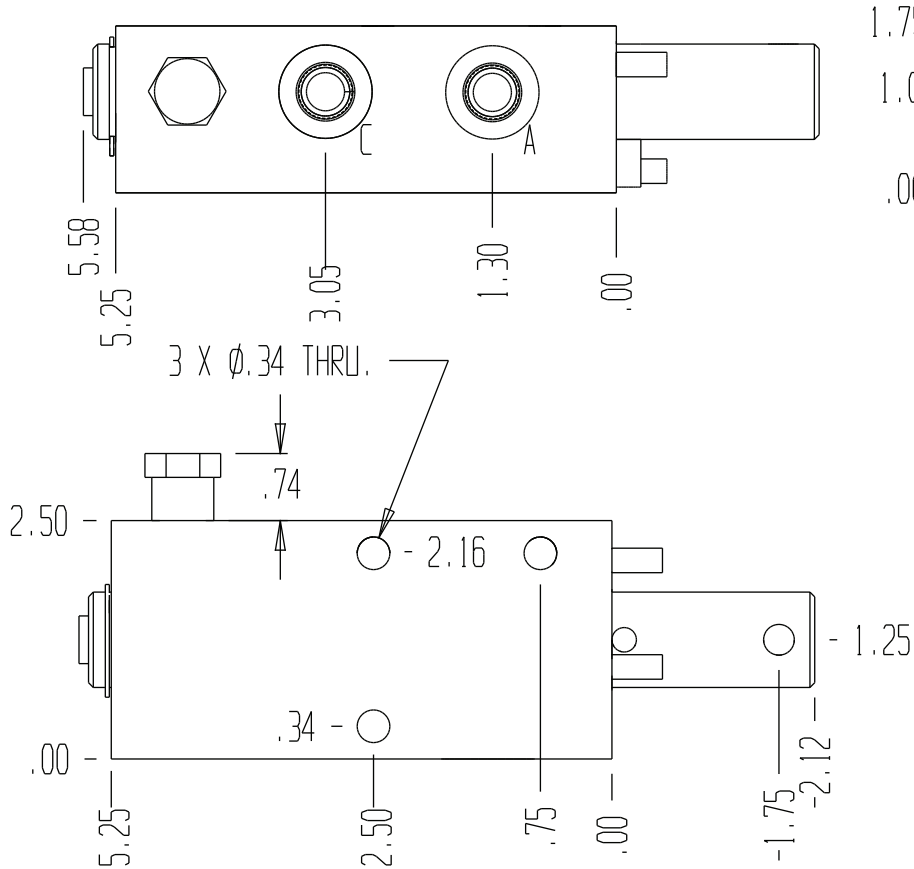
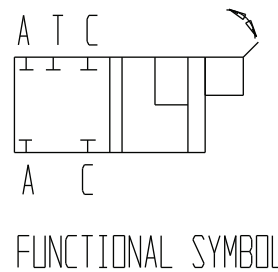


8098



5 PORTS ARE SAE  
NO. 6 (.56-18) O-RING.

GENERAL SPECIFICATIONS	
PRESSURE	5,000 PSI WORKING
FLOW RATE	20 GPM
MEDIA	PETROLEUM MINERAL BASE SAE 20. OTHER BASES MAY REQUIRE SEAL CHANGES.
SEAL KIT	1184
LEAKAGE MAX.	INTERNAL- 5 CUBIC INCHES/MIN., EXTERNAL- NONE.



90° ROTARY SPOOL LOCK VALVE  
WITH DETENT IN THE OPEN POSITION.