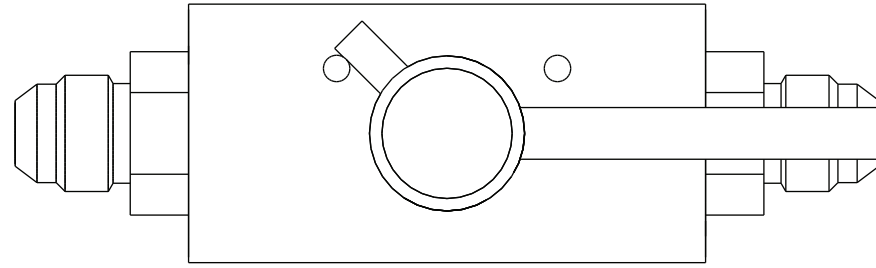
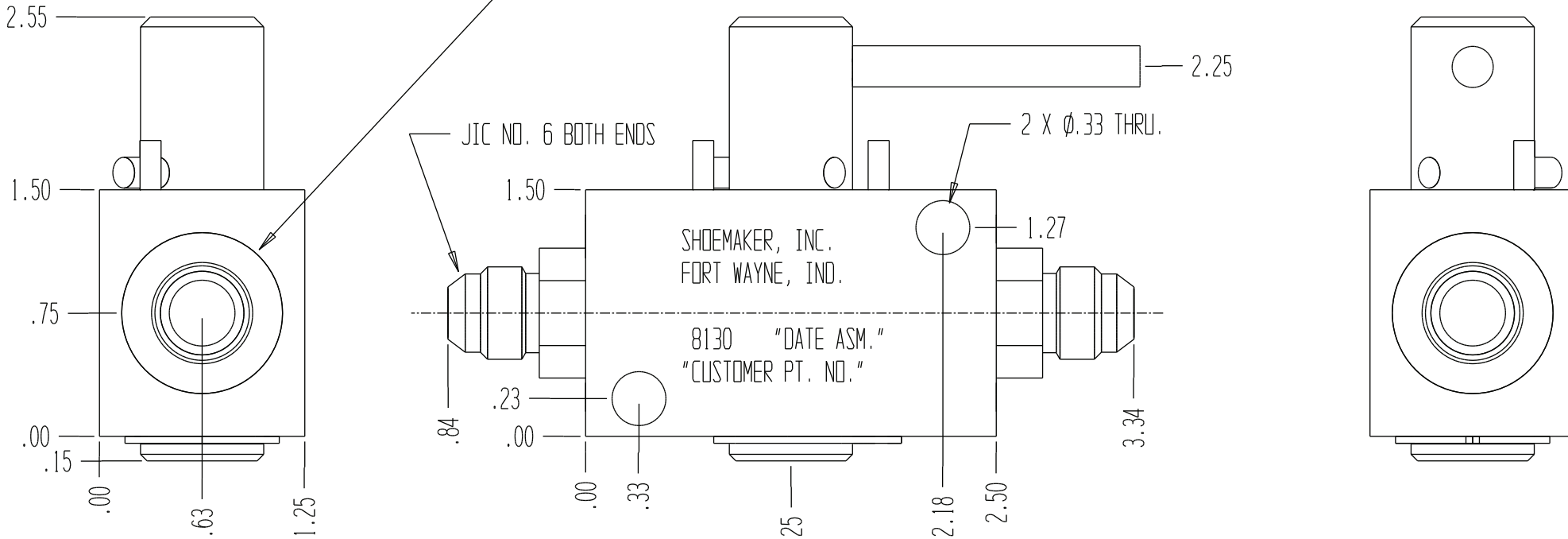


8130



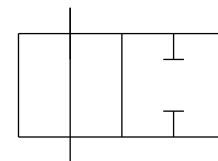
SHOWN IN OPEN POSITION

MACHINED PORTS IN BODY ARE SAE No. 6 (.56-18) O-RING.



- NOTES: 1. SUITABLE FOR HYDRAULIC SERVICE UP TO 5,000 PSI.
 2. BODY, SPOOL AND HARDWARE ARE ZINC PLATED STEEL.
 3. MAXIMUM LEAKAGE: 1 IN³/MIN. AT 1500 PSI

GENERAL SPECIFICATIONS	
PRESSURE	5,000 PSI WORKING
FLOW RATE	20 GPM
MEDIA	PETROLEUM MINERAL BASE SAE 20. OTHER BASES MAY REQUIRE SEAL CHANGES.
SEAL KIT	
LEAKAGE	INTERNAL- 1 CUBIC INCHES/MIN., EXTERNAL-NONE.



FUNCTIONAL SYMBOL