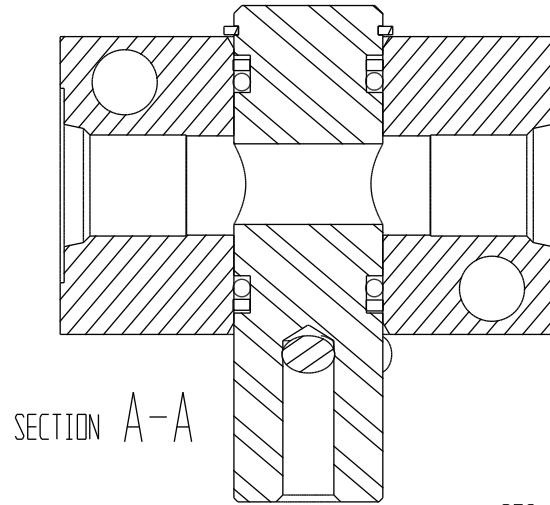
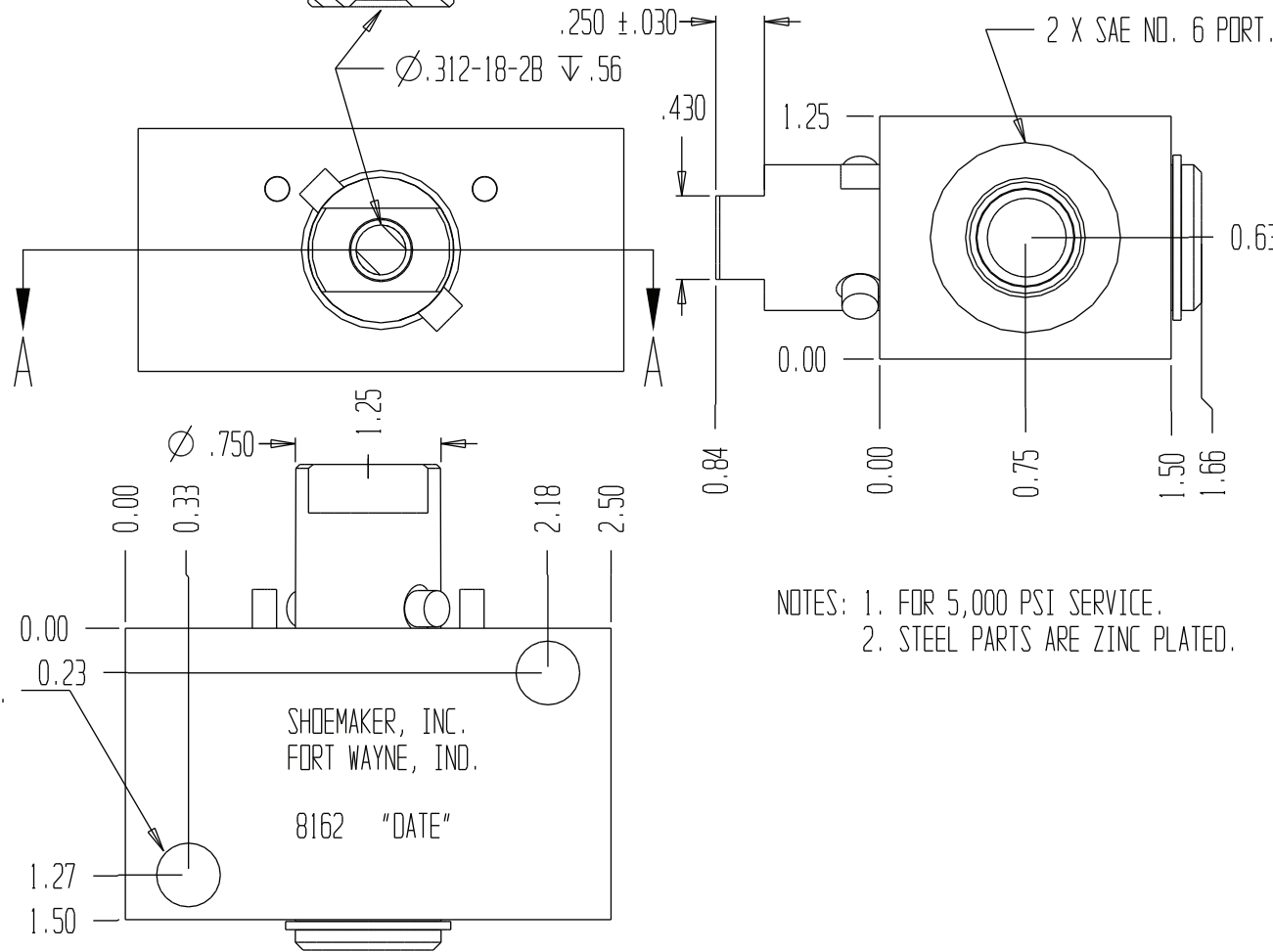
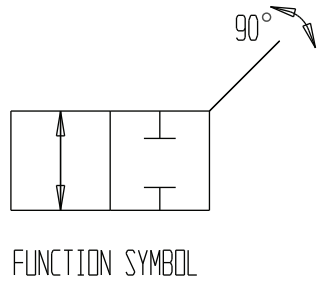


8162



SECTION A-A



NOTES: 1. FOR 5,000 PSI SERVICE.
2. STEEL PARTS ARE ZINC PLATED.

	GENERAL SPECIFICATIONS
PRESSURE	5,000 PSI WORKING
FLOW RATE	20 GPM
MEDIA	PETROLEUM MINERAL BASE SAE 20. OTHER BASES MAY REQUIRE SEAL CHANGES.
SEAL KIT	5183
LEAKAGE	INTERNAL- 5 CUBIC INCHES/MIN., EXTERNAL-NONE.

SHOEMAKER, INC.
FORT WAYNE, IND.

8162 "DATE"