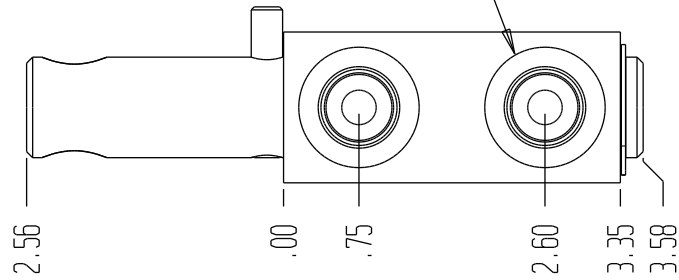
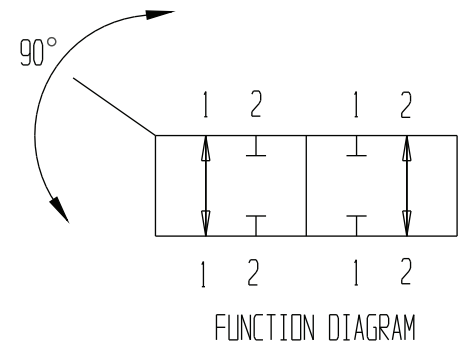
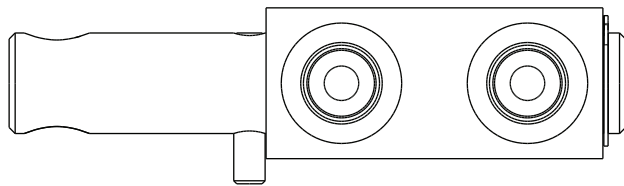
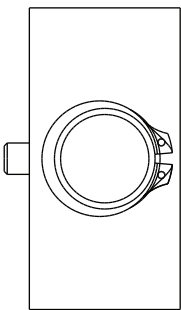
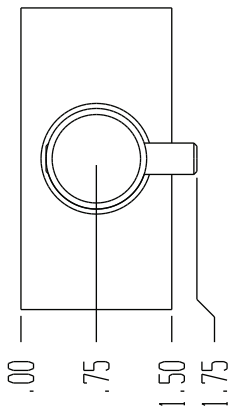
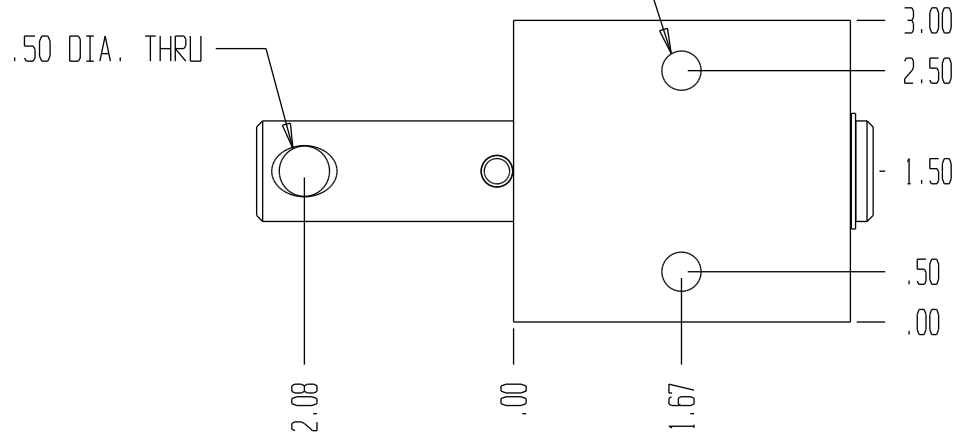


8190

4 PORTS ARE SAE
NO. 8 (.75-16) O-RING



.39 DIA. THRU
2 PLACES



GENERAL SPECIFICATIONS	
PRESSURE	5,000 PSI WORKING
FLOW RATE	20 GPM
MEDIA	PETROLEUM MINERAL BASE SAE 20. OTHER BASES MAY REQUIRE SEAL CHANGES.
SEAL KIT	5070(BUNA) 5186(URETHANE)
LEAKAGE	INTERNAL- 5 CUBIC INCHES/MIN., EXTERNAL-NONE.