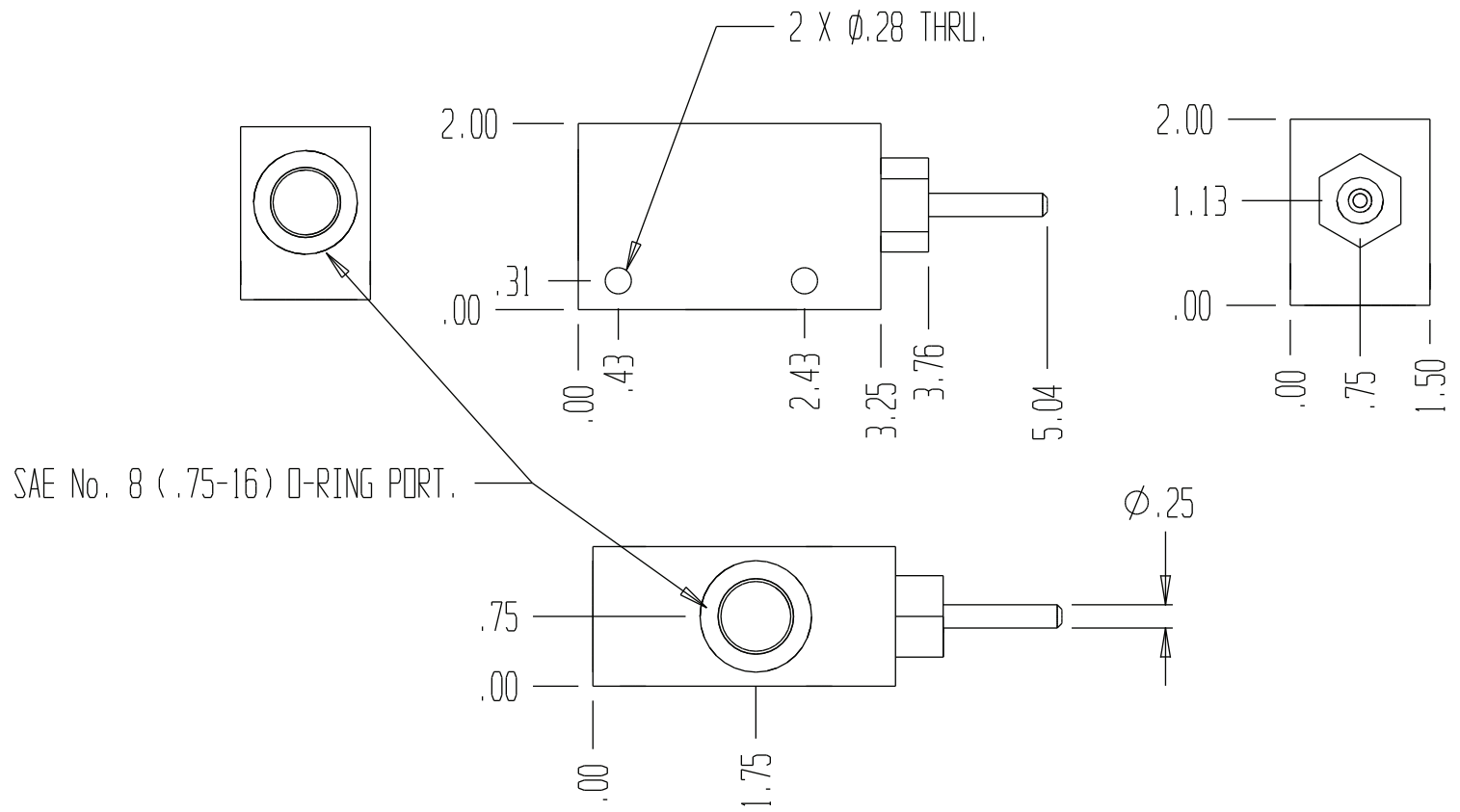
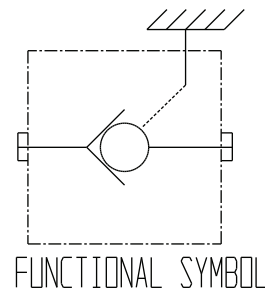


3067



	GENERAL SPECIFICATIONS
PRESSURE	5,000 PSI WORKING
FLOW RATE	15 GPM
MEDIA	PETROLEUM MINERAL BASE SAE 20. OTHER BASES MAY REQUIRE SEAL CHANGES.
SEAL KIT	1451
LEAKAGE - MAX.	INTERNAL - 5 DROPS/MIN., EXTERNAL - NONE.



LIMIT VALVE OR STROKE LIMITER.  
15 GPM CAPACITY. STEEL TO STEEL CHECK.