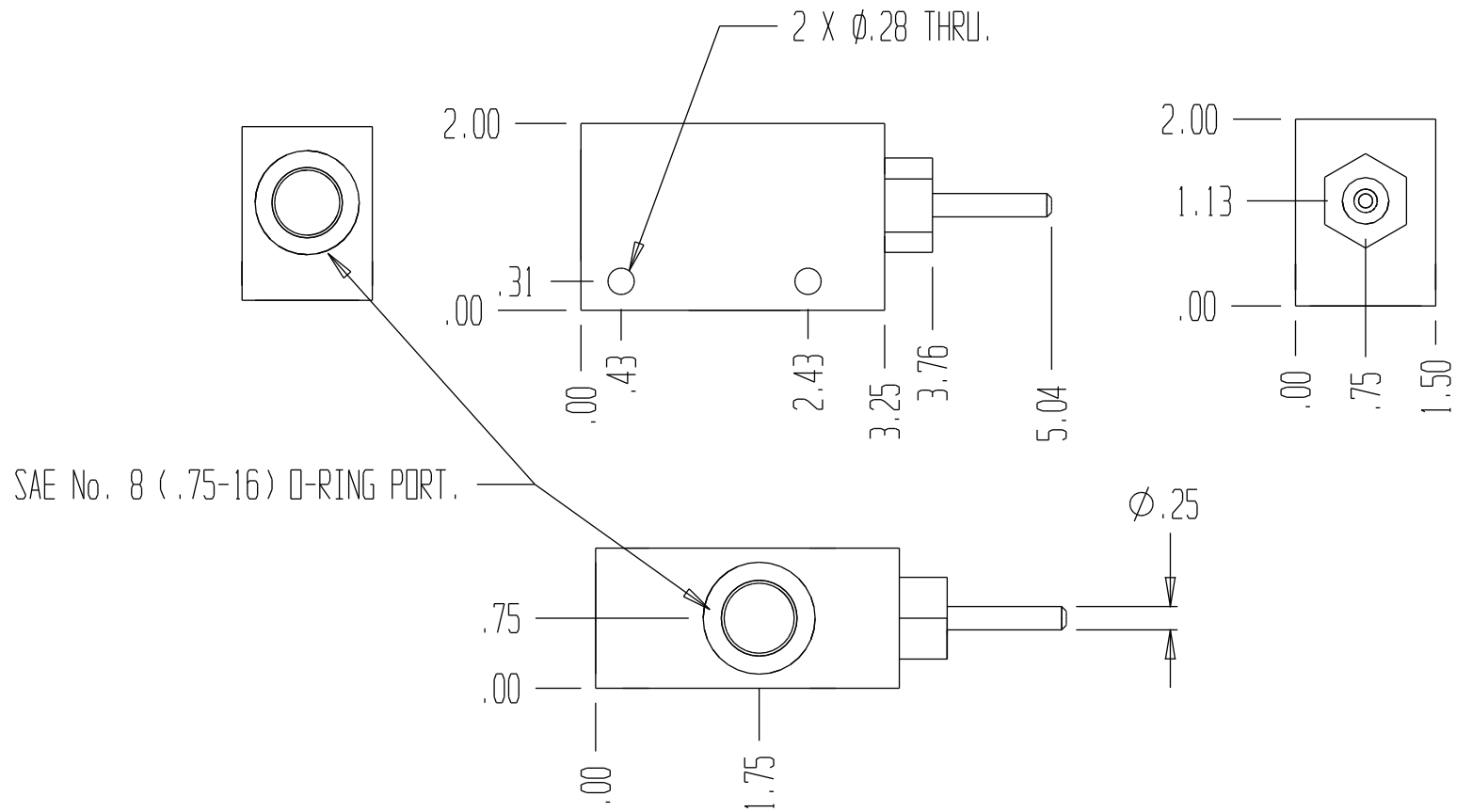
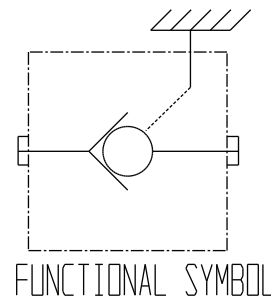


8095



GENERAL SPECIFICATIONS	
PRESSURE	5,000 PSI WORKING
FLOW RATE	15 GPM
MEDIA	PETROLEUM MINERAL BASE SAE 20. OTHER BASES MAY REQUIRE SEAL CHANGES.
SEAL KIT	5398
LEAKAGE - MAX.	INTERNAL - 0 DROPS/MIN., EXTERNAL - NONE.



LIMIT VALVE OR STROKE LIMITER.
15 GPM CAPACITY WITH O-RING
SEAL ON PISTON POPPET.