

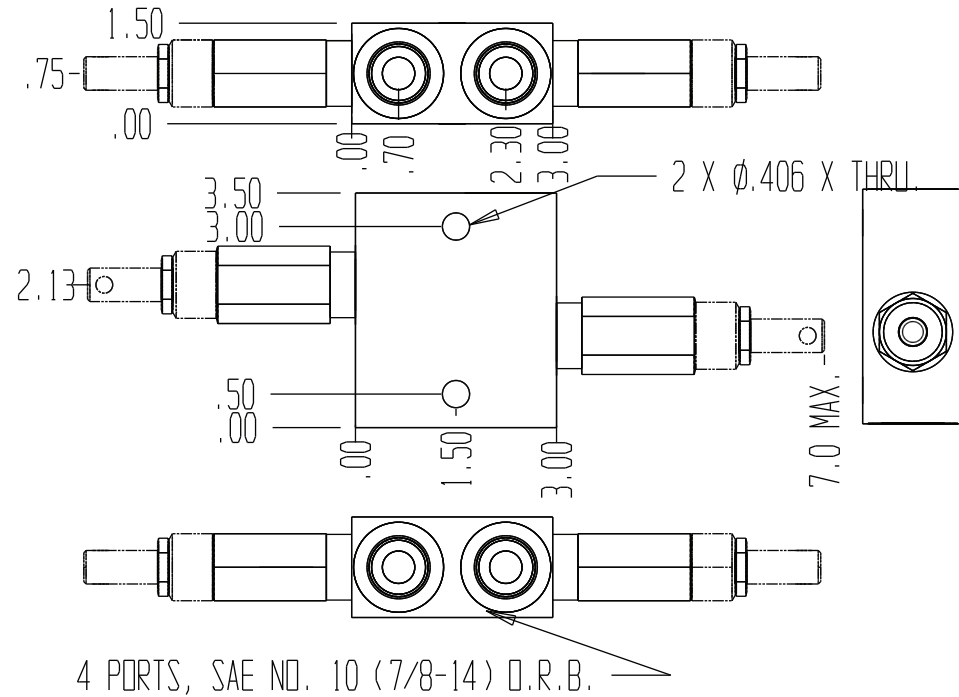
8018-XX-XX

"FR" AND "F" SET PRESSURE/100

MODEL NO.	SEALS	ADJUSTMENT	PRESSURE RANGE	NUMBER
RDIR-10C	BUNA	A	100 - 600 PSI	01
RDIR-10C	BUNA	A	300 - 1800 PSI	02
RDIR-10C	BUNA	A	1000 - 3600 PSI	03
RDIR-10CV	VITON	A	100 - 600 PSI	04
RDIR-10CV	VITON	A	300 - 1800 PSI	05
RDIR-10CV	VITON	A	1000 - 3600 PSI	06
RDIF-10C	BUNA	A	100 - 600 PSI	07
RDIF-10C	BUNA	A	300 - 1800 PSI	08
RDIF-10C	BUNA	A	1000 - 3600 PSI	09
RDIF-10CV	VITON	A	100 - 600 PSI	10
RDIF-10CV	VITON	A	300 - 1800 PSI	11
RDIF-10CV	VITON	A	1000 - 3600 PSI	12
RDIR-10C	BUNA	FR	100 - 600 PSI	13
RDIR-10C	BUNA	FR	300 - 1800 PSI	14
RDIR-10C	BUNA	FR	1000 - 3600 PSI	15
RDIR-10CV	VITON	FR	100 - 600 PSI	16
RDIR-10CV	VITON	FR	300 - 1800 PSI	17
RDIR-10CV	VITON	FR	1000 - 3600 PSI	18

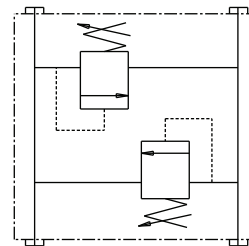
MODEL NO.	SEALS	ADJUSTMENT	PRESSURE RANGE	NUMBER
RDIF-10C	BUNA	FR	100 - 600 PSI	19
RDIF-10C	BUNA	FR	300 - 1800 PSI	20
RDIF-10C	BUNA	FR	1000 - 3600 PSI	21
RDIF-10CV	VITON	FR	100 - 600 PSI	22
RDIF-10CV	VITON	FR	300 - 1800 PSI	23
RDIF-10CV	VITON	FR	1000 - 3600 PSI	24
RDIR-10C	BUNA	F	100 - 600 PSI	25
RDIR-10C	BUNA	F	300 - 1800 PSI	26
RDIR-10C	BUNA	F	1000 - 3600 PSI	27
RDIR-10CV	VITON	F	100 - 600 PSI	28
RDIR-10CV	VITON	F	300 - 1800 PSI	29
RDIR-10CV	VITON	F	1000 - 3600 PSI	30
RDIF-10C	BUNA	F	100 - 600 PSI	31
RDIF-10C	BUNA	F	300 - 1800 PSI	32
RDIF-10C	BUNA	F	1000 - 3600 PSI	33
RDIF-10CV	VITON	F	100 - 600 PSI	34
RDIF-10CV	VITON	F	300 - 1800 PSI	35
RDIF-10CV	VITON	F	1000 - 3600 PSI	36

A = ADJUSTABLE EXTERNALLY
 FR = FIXED WITH REMOVEABLE PLUG.
 F = FIXED WITH TAMPER RESISTANT PLUG.



CROSS-OVER OR CUSHION VALVE

GENERAL SPECIFICATIONS	
PRESSURE	5,000 PSI WORKING
FLOW RATE	RDIR = 15 GPM, RDIF = 25 GPM
MEDIA	PETROLEUM MINERAL BASE SAE 20. OTHER BASES MAY REQUIRE SEAL CHANGES.
SEAL KIT	2 X 5070
LEAKAGE - MAX.	INTERNAL - 10 DROPS/MIN., EXTERNAL - NONE.



FUNCTIONAL SYMBOL