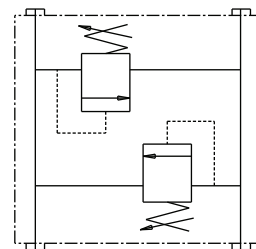


	GENERAL SPECIFICATIONS
PRESSURE	5,000 PSI WORKING
FLOW RATE	RDIR=15 GPM, RDIF=25 GPM
MEDIA	PETROLEUM MINERAL BASE SAE 20. OTHER BASES MAY REQUIRE SEAL CHANGES.
SEAL KIT	2 X 5070
LEAKAGE - MAX.	INTERNAL - 10 DROPS/MIN., EXTERNAL-NONE.



FUNCTIONAL SYMBOL

CROSS-OVER OR CUSHION VALVE FOR MOBILE APPLICATION. COUPLINGS ARE PIONEER 4050-16P OR EQUAL.