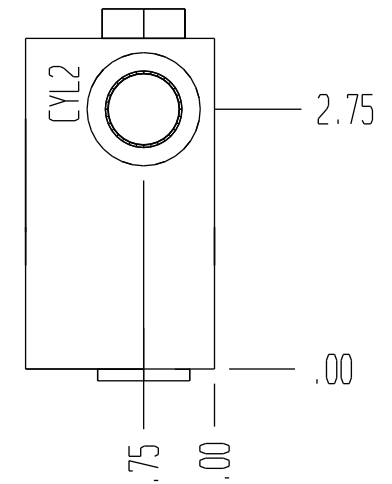
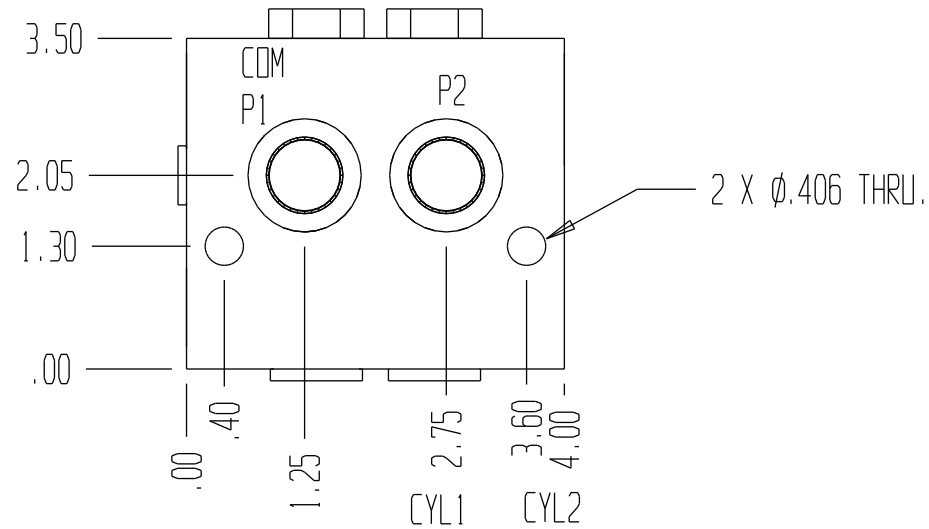
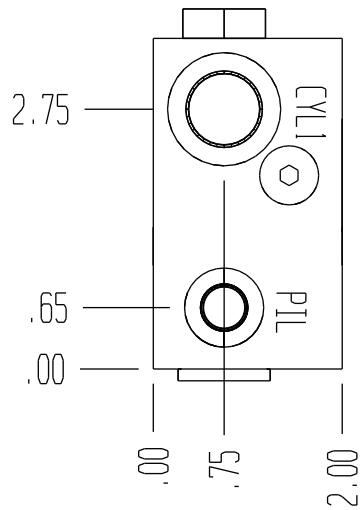


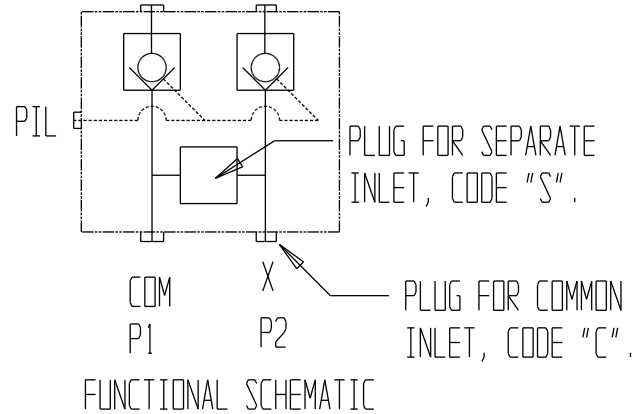
8102-XXX-X

S = SEPARATE "P1" AND "P2" INLETS
 C = COMMON "P1" AND "P2" INLETS

351 = 35 : 1 RATIO
 41 = 4 : 1 RATIO



GENERAL SPECIFICATIONS	
PRESSURE	5,000 PSI WORKING
FLOW RATE	08 GPM AT 100 PSI DIFFERENTIAL.
MEDIA	PETROLEUM MINERAL BASE SAE 20. OTHER BASES MAY REQUIRE SEAL CHANGES.
SEAL KIT: 5218	FOR 8102-35:1-C OR 8102-4:1-C
SEAL KIT: 5219	FOR 8102-35:1-S OR 8102-4:1-S
LEAKAGE - MAX.	INTERNAL - P1L TO CYL. 1.0 GPM, EXTERNAL-NONE.



2 PILOT CHECK VALVE CIRCUITS WITH COMMON PILOT. THE INLET MAYBE 1 OR 2 SOURCES AND THE PILOT RATIO IS SELECTABLE.