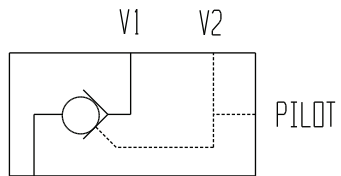
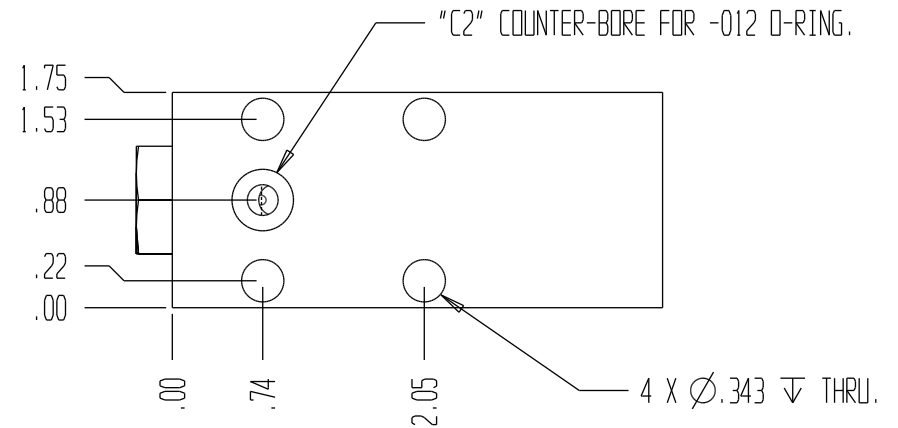
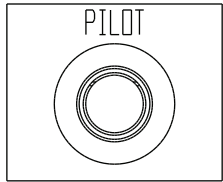
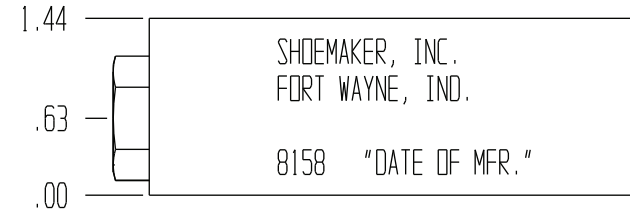
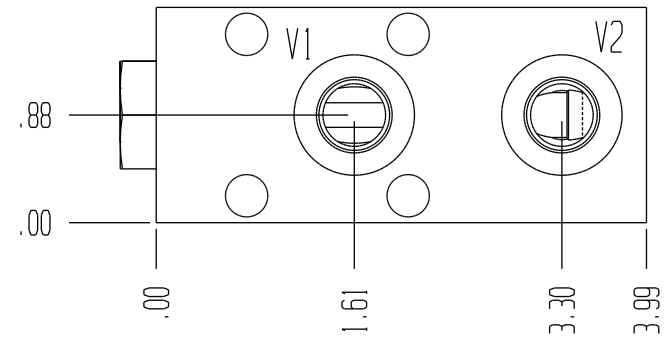
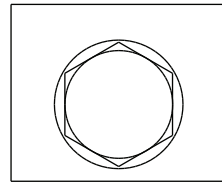


8158



C2

FUNCTION SYMBOL



GENERAL SPECIFICATIONS	
PRESSURE	5,000 PSI WORKING
FLOW RATE	08 GPM AT 100 PSI DIFFERENTIAL.
MEDIA	PETROLEUM MINERAL BASE SAE 20. OTHER BASES MAY REQUIRE SEAL CHANGES.
PILOT RATIO	3.25 : 1
SEAL KIT	1198
LEAKAGE	INTERNAL-2 DROPS/MIN., EXTERNAL-NONE.