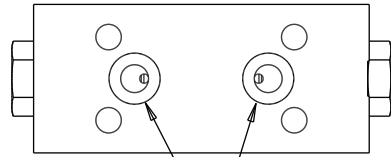
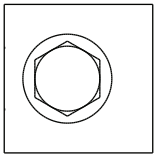
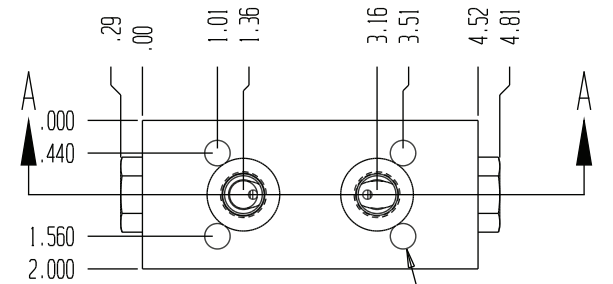
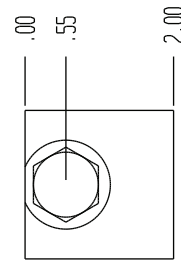
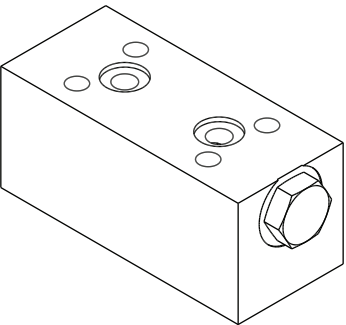
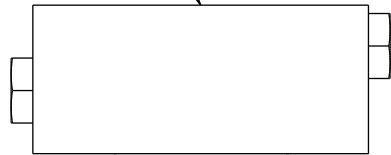


8198

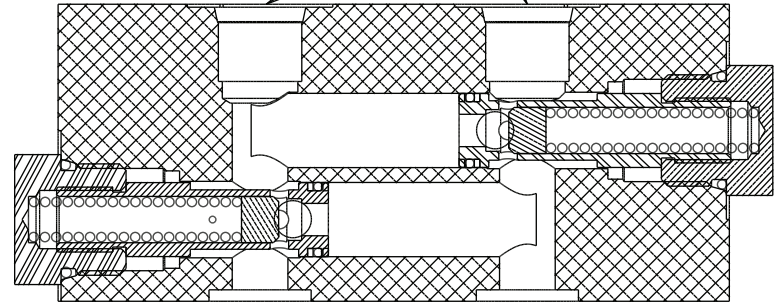


$\varnothing .686 \pm .003 \nabla .077 \pm .003$ ,  
COUNTERBORE 2 PLACES.



SAE 06 PORT

$\varnothing .343 \nabla$  THRU  
4 PLACES



SECTION A-A

CROSSOVER RELIEF FOR PAD MOUNT.  
FIXED AT  $1850 \pm 100$  PSI.