

ITEM	QTY.	PART NO.	DESCRIPTION
1	1	5930	BODY
2	1	1424	PISTON, PILOT
3	2	CPI-10	CHECK CARTRIDGE
4	4	1219-06	VINYL PLUG FOR SHIPPING
5	2	SEE CHART BELOW	CARTRIDGE, RELIEF VALVE

"FR" AND "F" SET PRESSURE/100

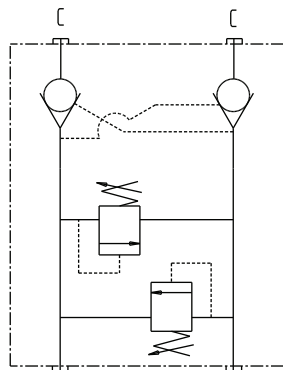
SELECT  
- NUMBER

MODEL NO. 8275-XX-XX

MODEL NO.	SEALS	ADJUSTMENT	PRESSURE RANGE	SELECT - NUMBER
RD1R-10C	BUNA	A	100 - 600 PSI	-01
RD1R-10C	BUNA	A	300 - 1800 PSI	-02
RD1R-10C	BUNA	A	1000 - 3600 PSI	-03
RD1R-10CV	VITON	A	100 - 600 PSI	-04
RD1R-10CV	VITON	A	300 - 1800 PSI	-05
RD1R-10CV	VITON	A	1000 - 3600 PSI	-06
RD1F-10C	BUNA	A	100 - 600 PSI	-07
RD1F-10C	BUNA	A	300 - 1800 PSI	-08
RD1F-10C	BUNA	A	1000 - 3600 PSI	-09
RD1F-10CV	VITON	A	100 - 600 PSI	-10
RD1F-10CV	VITON	A	300 - 1800 PSI	-11
RD1F-10CV	VITON	A	1000 - 3600 PSI	-12
RD1R-10C	BUNA	FR	100 - 600 PSI	-13
RD1R-10C	BUNA	FR	300 - 1800 PSI	-14
RD1R-10C	BUNA	FR	1000 - 3600 PSI	-15
RD1R-10CV	VITON	FR	100 - 600 PSI	-16
RD1R-10CV	VITON	FR	300 - 1800 PSI	-17
RD1R-10CV	VITON	FR	1000 - 3600 PSI	-18
RD1F-10C	BUNA	FR	100 - 600 PSI	-19
RD1F-10C	BUNA	FR	300 - 1800 PSI	-20
RD1F-10C	BUNA	FR	1000 - 3600 PSI	-21
RD1F-10CV	VITON	FR	100 - 600 PSI	-22
RD1F-10CV	VITON	FR	300 - 1800 PSI	-23
RD1F-10CV	VITON	FR	1000 - 3600 PSI	-24
RD1R-10C	BUNA	F	100 - 600 PSI	-25
RD1R-10C	BUNA	F	300 - 1800 PSI	-26
RD1R-10C	BUNA	F	1000 - 3600 PSI	-27
RD1R-10CV	VITON	F	100 - 600 PSI	-28
RD1R-10CV	VITON	F	300 - 1800 PSI	-29
RD1R-10CV	VITON	F	1000 - 3600 PSI	-30
RD1F-10C	BUNA	F	100 - 600 PSI	-31
RD1F-10C	BUNA	F	300 - 1800 PSI	-32
RD1F-10C	BUNA	F	1000 - 3600 PSI	-33
RD1F-10CV	VITON	F	100 - 600 PSI	-34
RD1F-10CV	VITON	F	300 - 1800 PSI	-35
RD1F-10CV	VITON	F	1000 - 3600 PSI	-36

6	0	2 PCS. 5070, 2 PCS. 5071	SEAL KIT
---	---	--------------------------	----------

A = ADJUSTABLE EXTERNALLY  
FR = FIXED WITH REMOVEABLE PLUG.  
F = FIXED WITH TAMPER RESISTANT PLUG.



FUNCTIONAL SYMBOL

