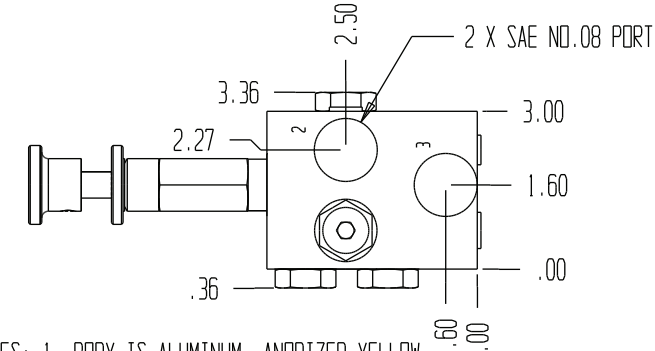
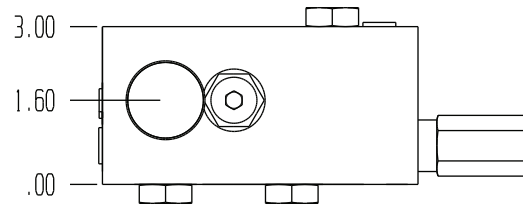
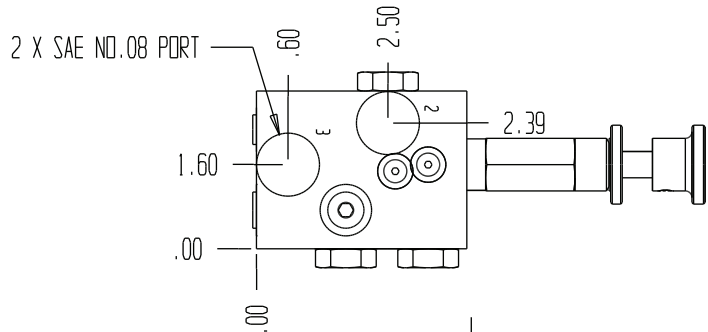
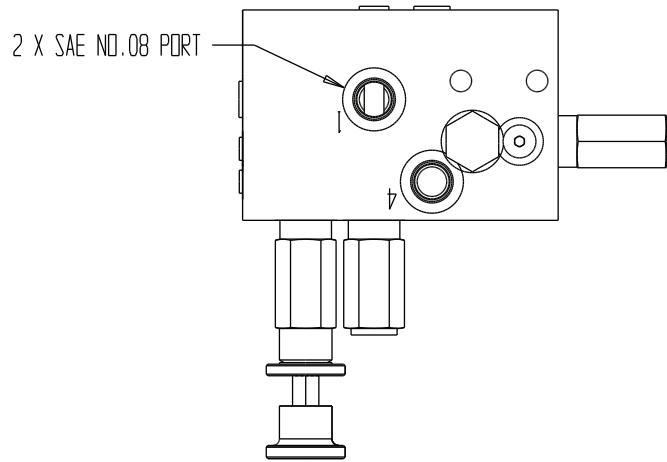
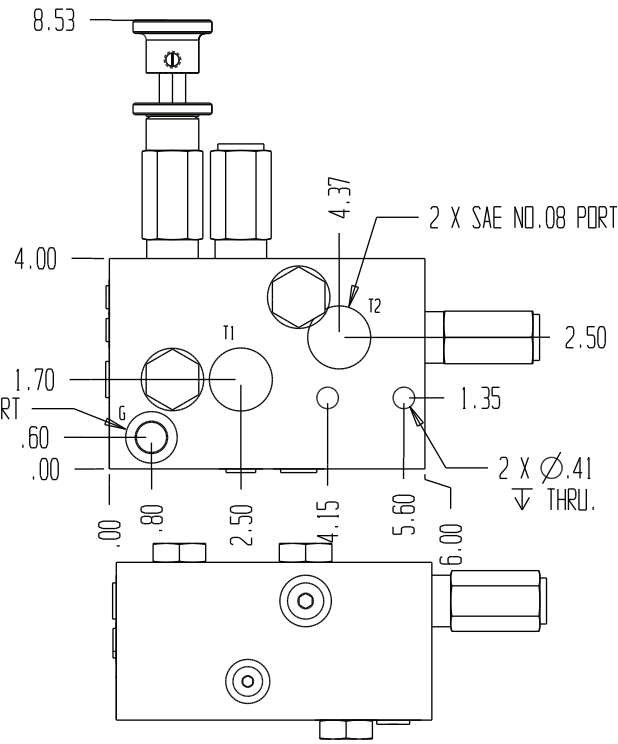
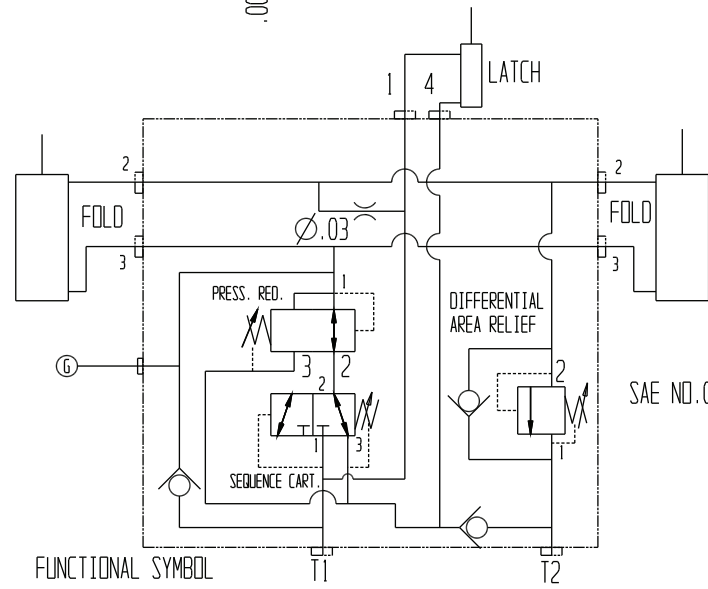


8160



NOTES: 1. BODY IS ALUMINUM, ANODIZED YELLOW.
2. STEEL COMPONENTS ARE ZINC PLATED.



OPERATION SEQUENCE:

1. UNFOLD WINGS - OIL FROM T1 IS SUPPLIED TO PORT 1, UNLATCH CYLINDER AND THE SEQUENCE CARTRIDGE. OIL IS ALSO ALLOWED THROUGH THE .030 DRIFICE TO THE ROD END OF THE FOLD CYLINDERS TO ASSURE THE WINGS ARE FULLY FOLDED SO THE LATCH IS FREE TO OPEN. WHEN THE LATCH CYLINDER IS RETRACTED AND THE PRESET PRESSURE IS REACHED AT THE SEQUENCE VALVE, THE SUPPLY IS DIRECTED THROUGH THE PRESSURE REDUCING VALVE AND THE WINGS WILL UNFOLD.
2. RETURN OIL WILL BE CONTROLLED BY THE D.A. RELIEF SO THAT THE WINGS DO NOT FREE FALL.
3. THE PRESSURE REDUCING VALVE WILL CONTROL THE FORCE THE FOLD CYLINDERS PROVIDE TO THE WINGS TO TRANSFER MAIN CARRIER WEIGHT.
4. FOLD WINGS - OIL FROM T2 IS SUPPLIED TO THE ROD END OF THE FOLD CYLINDERS BY THE FREE FLOW DIRECTION OF THE CHECK CARTRIDGE.
5. RETURN OIL WILL PASS THROUGH THE CHECK CARTRIDGE AND RETURN TO THE SUPPLY SUMP AT T1.

GENERAL SPECIFICATIONS	
PRESSURE	5,000 PSI WORKING
FLOW RATE	20 GPM
MEDIA	PETROLEUM MINERAL BASE SAE 20. OTHER BASES MAY REQUIRE SEAL CHANGES.
SEAL KIT	
LEAKAGE	INTERNAL- 10 CUBIC INCHES/MIN., EXTERNAL-NONE.